

NAVIN'S



MAYURA  
GARDENS

Valasaravakkam

A COMMUNITY THAT CONNECTS



# A LEGACY CRAFTED WITH VALUES.

Homes That Feel Like Family.

Our legacy isn't just in the buildings, it's in the lives we touch and the communities that flourish within them. Through unwavering transparency, heartfelt care, and a dedication to quality, Navin's has grown to become a name of belonging, warmth and trust.

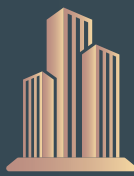


# NAVIN'S

The Home Makers Who Care

36

Years Of  
Commitment



128+  
Projects



3800+  
Happy Families



1575+  
Quality Checks



60+  
Awards



IGBC National  
Green Building Champion



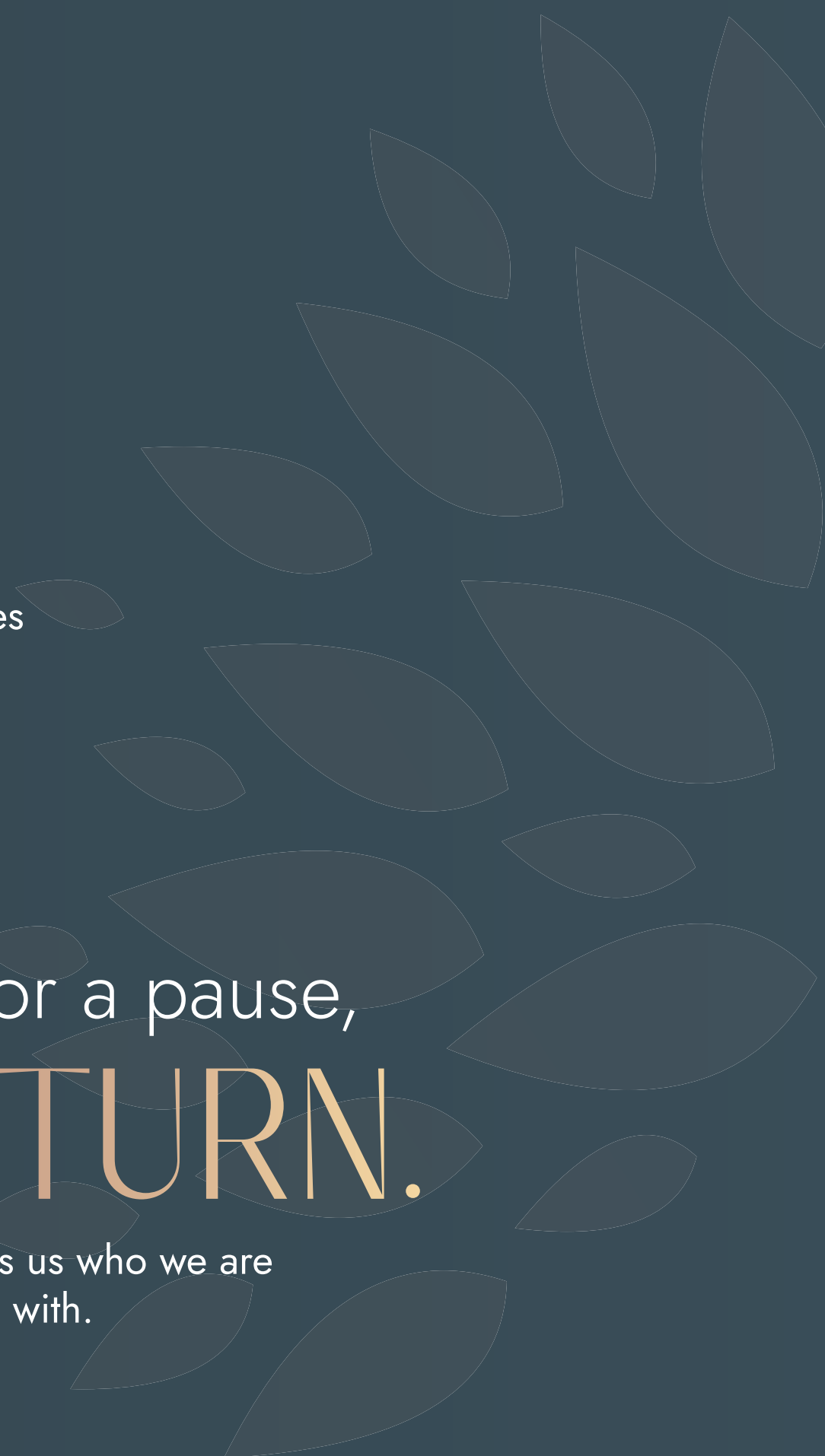
The images shown are for illustration purposes only. This does not replicate the final product.



In a world that moves  
too fast,

We look for a pause,  
**A RETURN.**

A place that reminds us who we are  
and who we belong with.



Like the graceful  
sweep of a

# PEACOCK'S DANCE.

Life becomes beautiful when it flows together  
families, neighbours, moments,  
memories, all in a gentle harmony.





The images shown are for illustration purposes only. This does not replicate the final product.

A lush garden scene with people interacting. In the foreground, a woman with long brown hair, wearing a light pink top and black pants, stands with her back to the camera, talking to a man in a light blue shirt and grey pants. The man is smiling and holding a white cup. In the background, another person is sitting on a white bench. The garden is filled with green grass, yellow flowers, and a large tree. A house is visible in the background, and the scene is lit with warm, golden light.

Here, connection isn't  
crafted, it unfolds..

In every  
**GREETING**

Every shared space,  
Every gentle reminder, that home is  
made by the people who fill it.



The images shown are for illustration purposes only. This does not replicate the final product.

Welcome to a community where  
connection finds its true form



MAYURA

— G A R D E N S —

A COMMUNITY THAT CONNECTS







**NAVIN'S**  
The Home Makers Who Care

The comforts that make a  
**COMMUNITY**  
Feel like home

PREMIUM 2, 3 &  
4BHK RESIDENCES

| 33% UDS

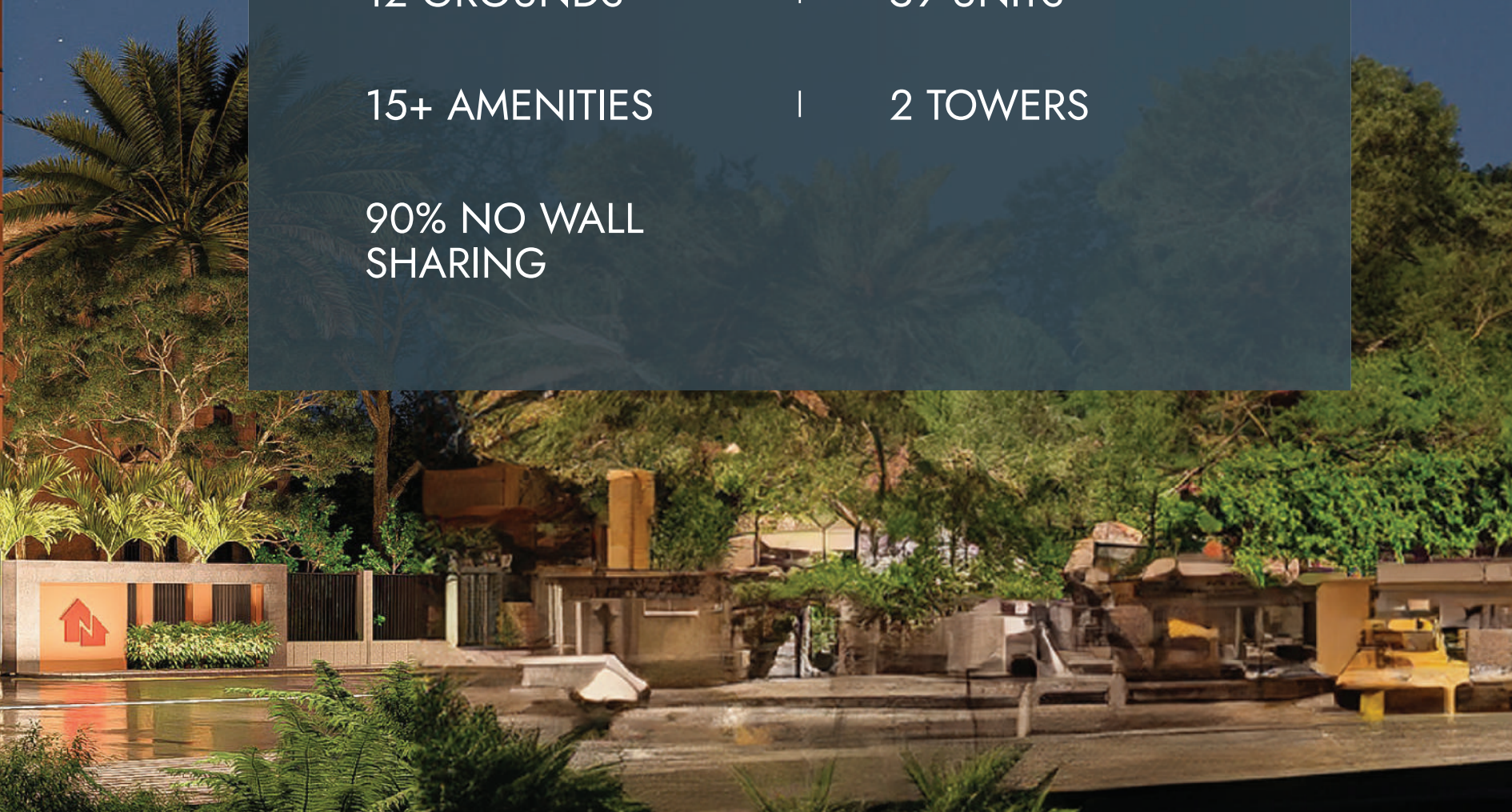
12 GROUNDS

| 59 UNITS

15+ AMENITIES

| 2 TOWERS

90% NO WALL  
SHARING





The images shown are for illustration purposes only. This does not replicate the final product.



Each one crafted to

DEEPEN THE  
CONNECTION

CONNECT TO  
YOUR LOVED  
ONES.





The images shown are for illustration purposes only. This does not replicate the final product.



The images shown are for illustration purposes only. This does not replicate the final product.



CONNECT  
TO THE  
COMMUNITY





The images shown are for illustration purposes only. This does not replicate the final product.



When building goes beyond structures,  
it becomes a promise.

SUSTAINABILITY.  
DONE RIGHT.

Recognised by IGBC  
and strengthened by 1,575+ quality checks  
that never cut corners.

# CONNECT TO TECHNOLOGY





The images shown are for illustration purposes only. This does not replicate the final product.



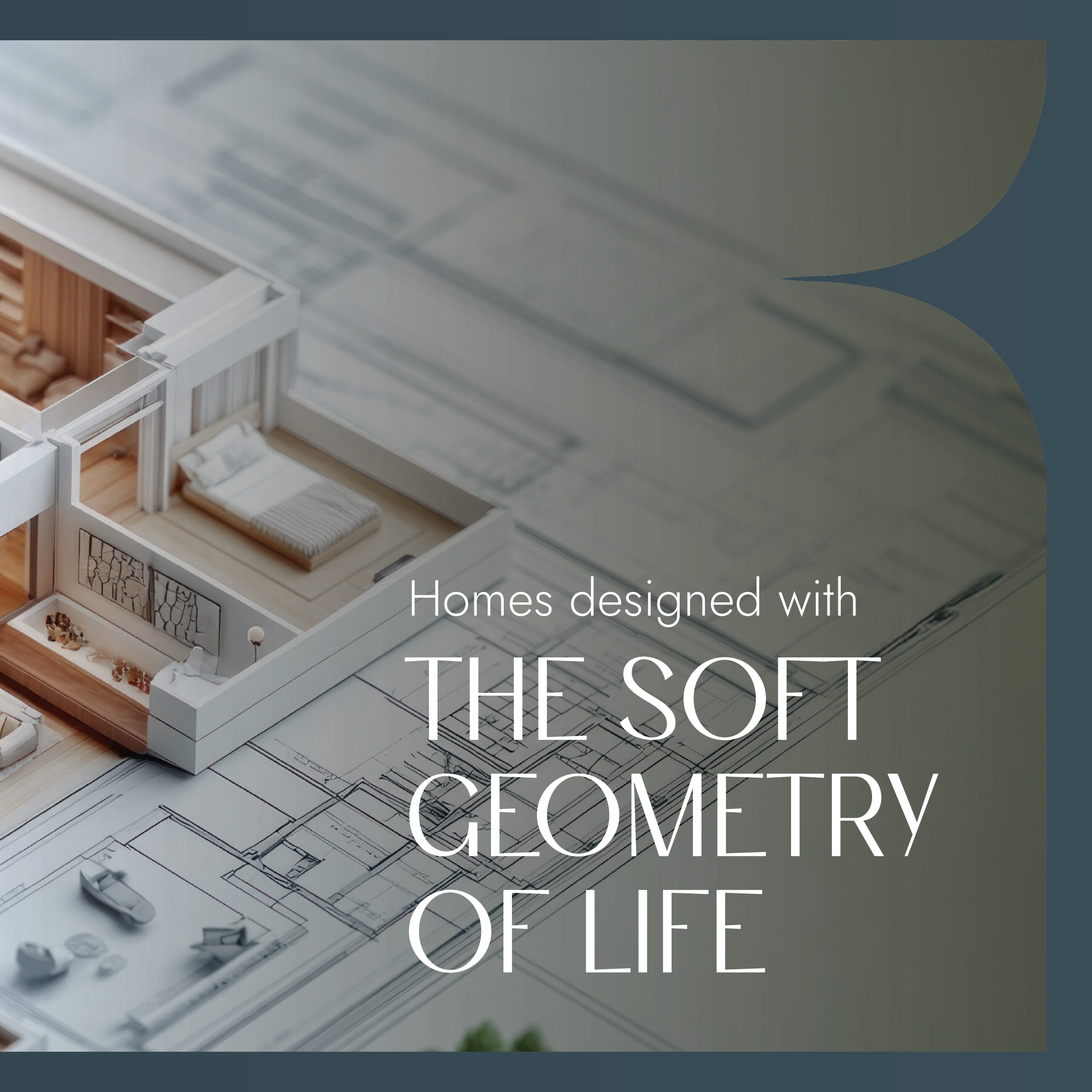
The images shown are for illustration purposes only. This does not replicate the final product.



# CONNECT TO THE COMMUNITY







Homes designed with  
**THE SOFT  
GEOMETRY  
OF LIFE**

# FIRST FLOOR PLAN









# STILT FLOOR PLAN





# TYPICAL FLOOR PLAN

---

## CORE A (2ND - 5TH)

# TYPICAL FLOOR PLAN

CORE B (2ND - 5TH)



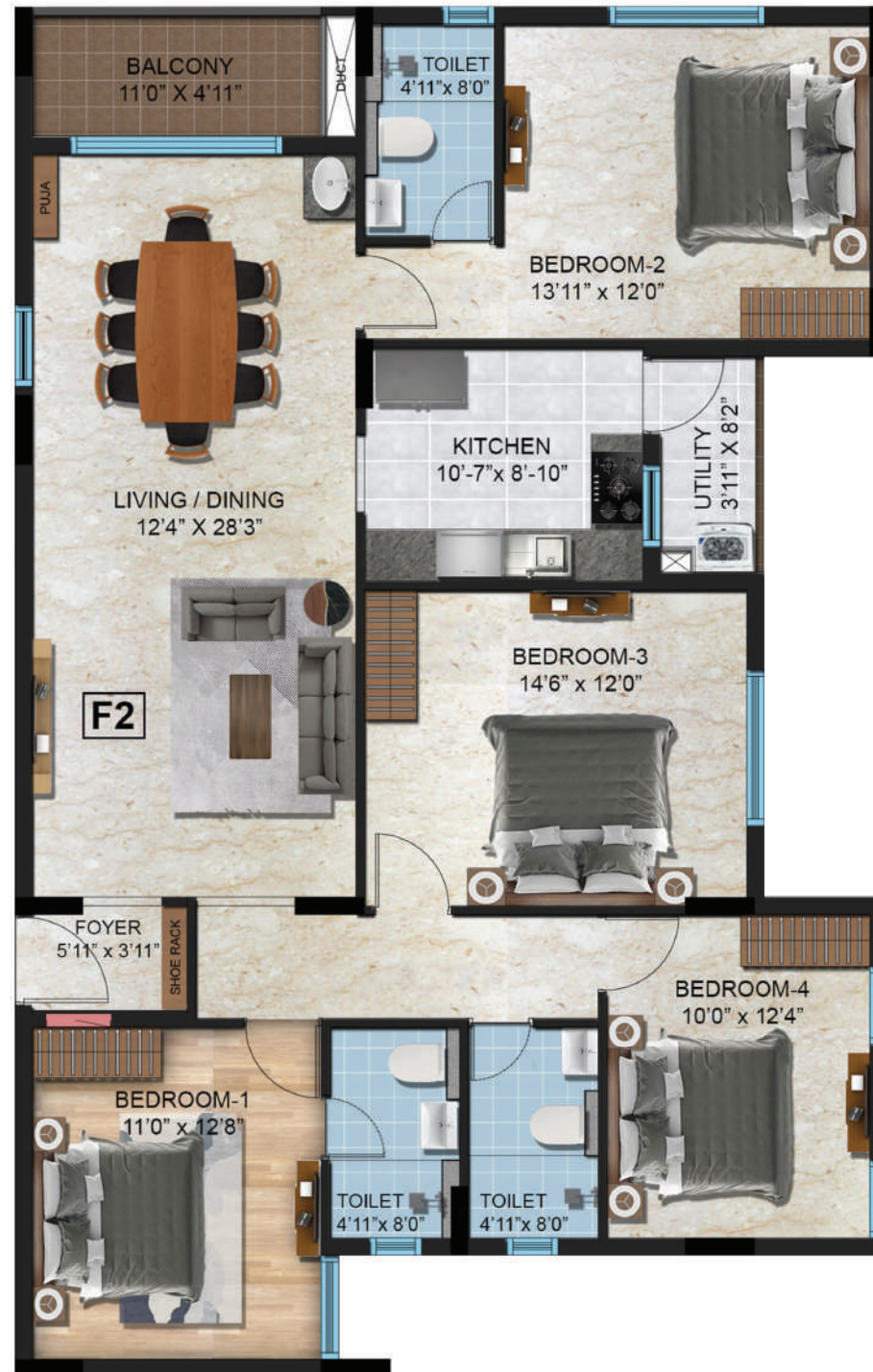
# FLAT - F1



Configuration	Super Build Up Area in Sq.ft	Carpet Area in Sq.ft		
		RERA Carpet Area	Exclusive Balcony Area	Total
2 BHK + 2T	1095	746	39	785



# FLAT - F2



Configuration	Super Build Up Area in Sq.ft	Carpet Area in Sq.ft		
		RERA Carpet Area	Exclusive Balcony Area	Total
4 BHK + 3T	1934	1324	86	1410



# FLAT - F3



Configuration	Super Build Up Area in Sq.ft	Carpet Area in Sq.ft		
		RERA Carpet Area	Exclusive Balcony Area	Total
2 BHK + 2T	1093	746	39	785



# FLAT - F4



Configuration	Super Build Up Area in Sq.ft	Carpet Area in Sq.ft		
		RERA Carpet Area	Exclusive Balcony Area	Total
3 BHK + 3T	1493	1046	39	1085



# FLAT - F5



Configuration	Super Build Up Area in Sq.ft	Carpet Area in Sq.ft		
		RERA Carpet Area	Exclusive Balcony Area	Total
<b>3 BHK + 3T</b>	<b>1457</b>	<b>1022</b>	<b>39</b>	<b>1061</b>



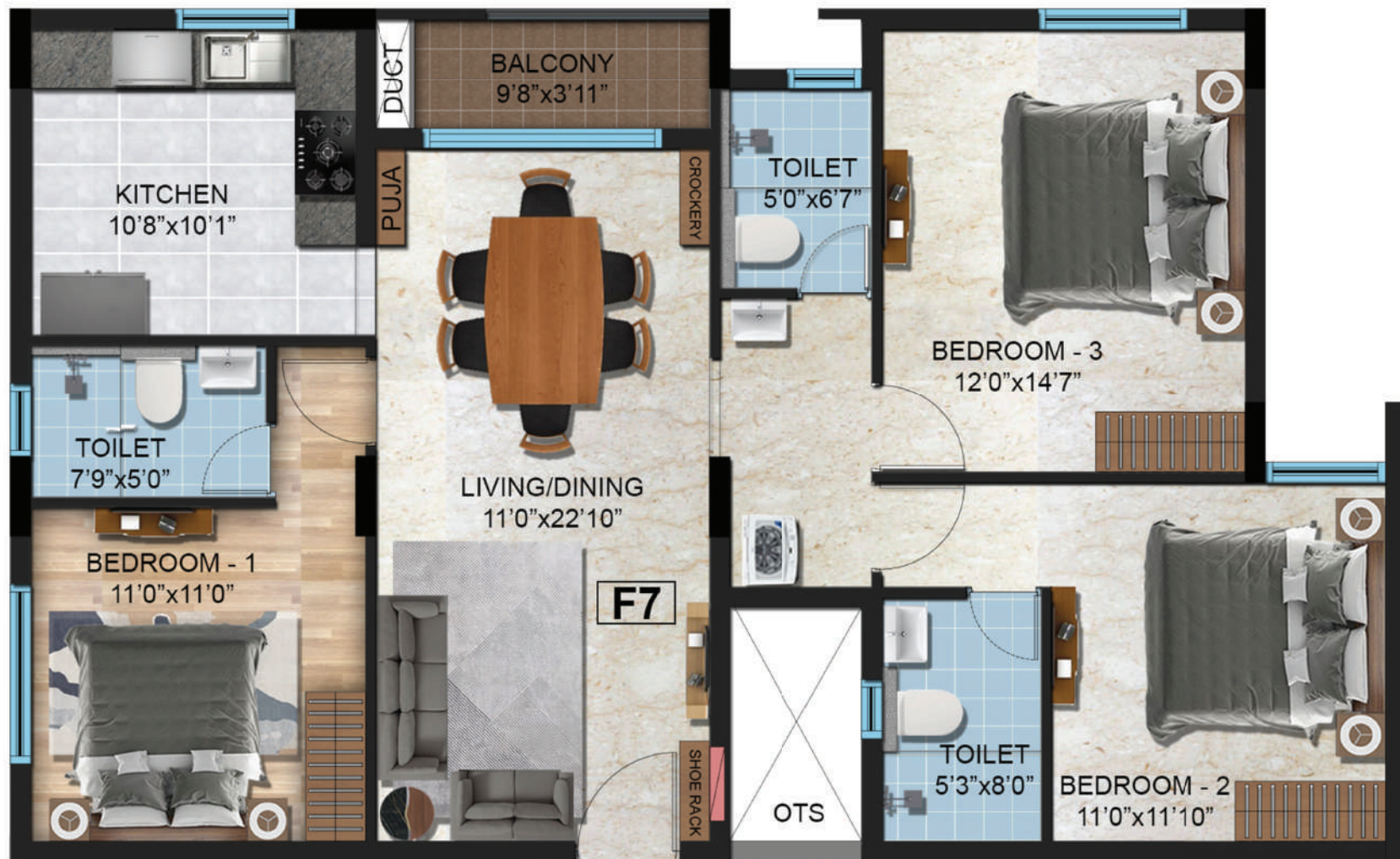
# FLAT - F6



Configuration	Super Build Up Area in Sq.ft	Carpet Area in Sq.ft		
		RERA Carpet Area	Exclusive Balcony Area	Total
3 BHK + 3T	1470	1023	39	1062



# FLAT - F7



Configuration	Super Build Up Area in Sq.ft	Carpet Area in Sq.ft		
		RERA Carpet Area	Exclusive Balcony Area	Total
3 BHK + 3T	1470	1023	39	1062



# FLAT - F8



Configuration	Super Build Up Area in Sq.ft	Carpet Area in Sq.ft		
		RERA Carpet Area	Exclusive Balcony Area	Total
3 BHK + 3T	1492	1049	39	1088



# FLAT - F9



Configuration	Super Build Up Area in Sq.ft	Carpet Area in Sq.ft		
		RERA Carpet Area	Exclusive Balcony Area	Total
3 BHK + 3T	1493	1047	39	1086



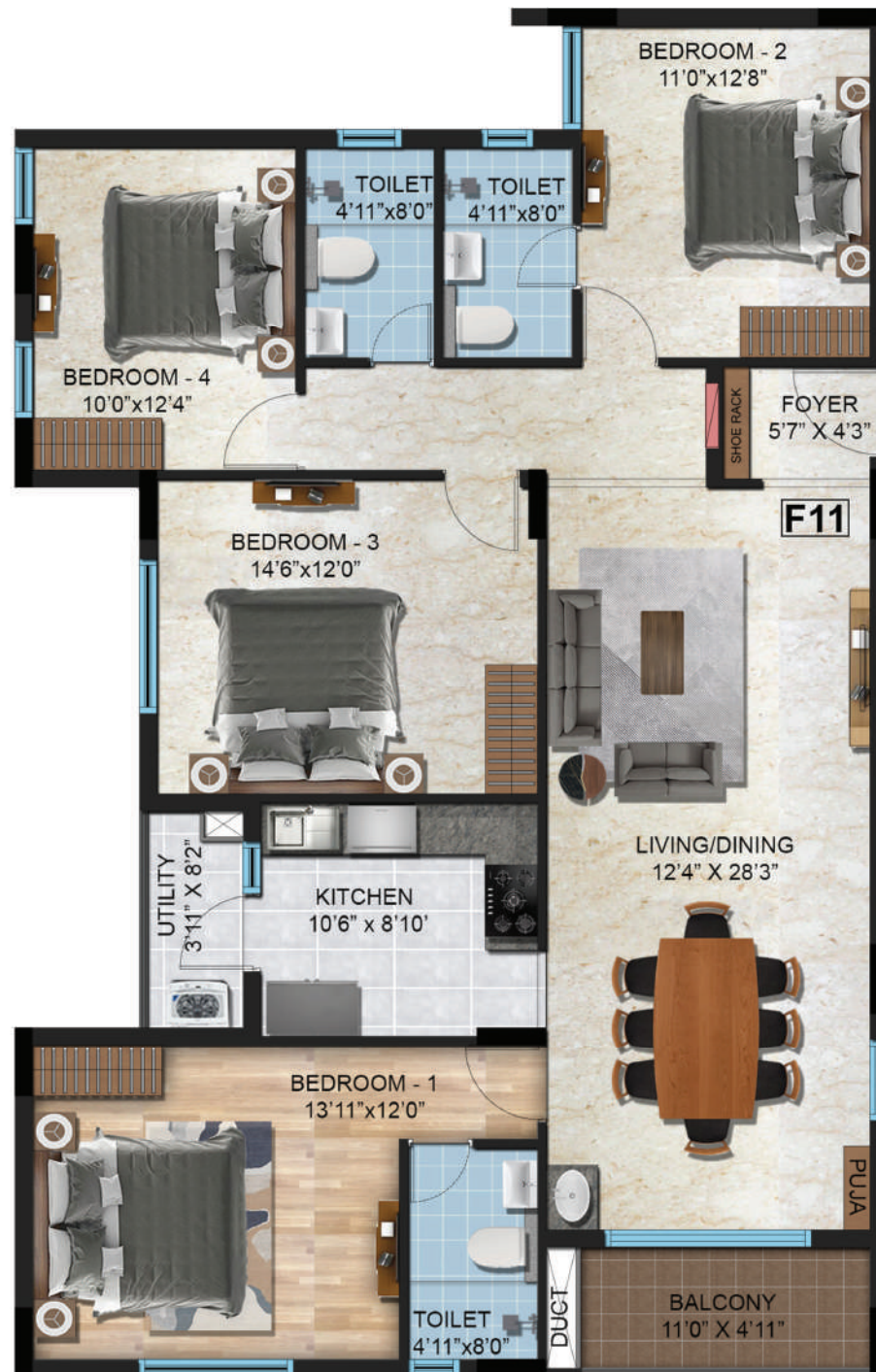
# FLAT - F10



Configuration	Super Build Up Area in Sq.ft	Carpet Area in Sq.ft		
		RERA Carpet Area	Exclusive Balcony Area	Total
2 BHK + 2T	1105	754	41	795



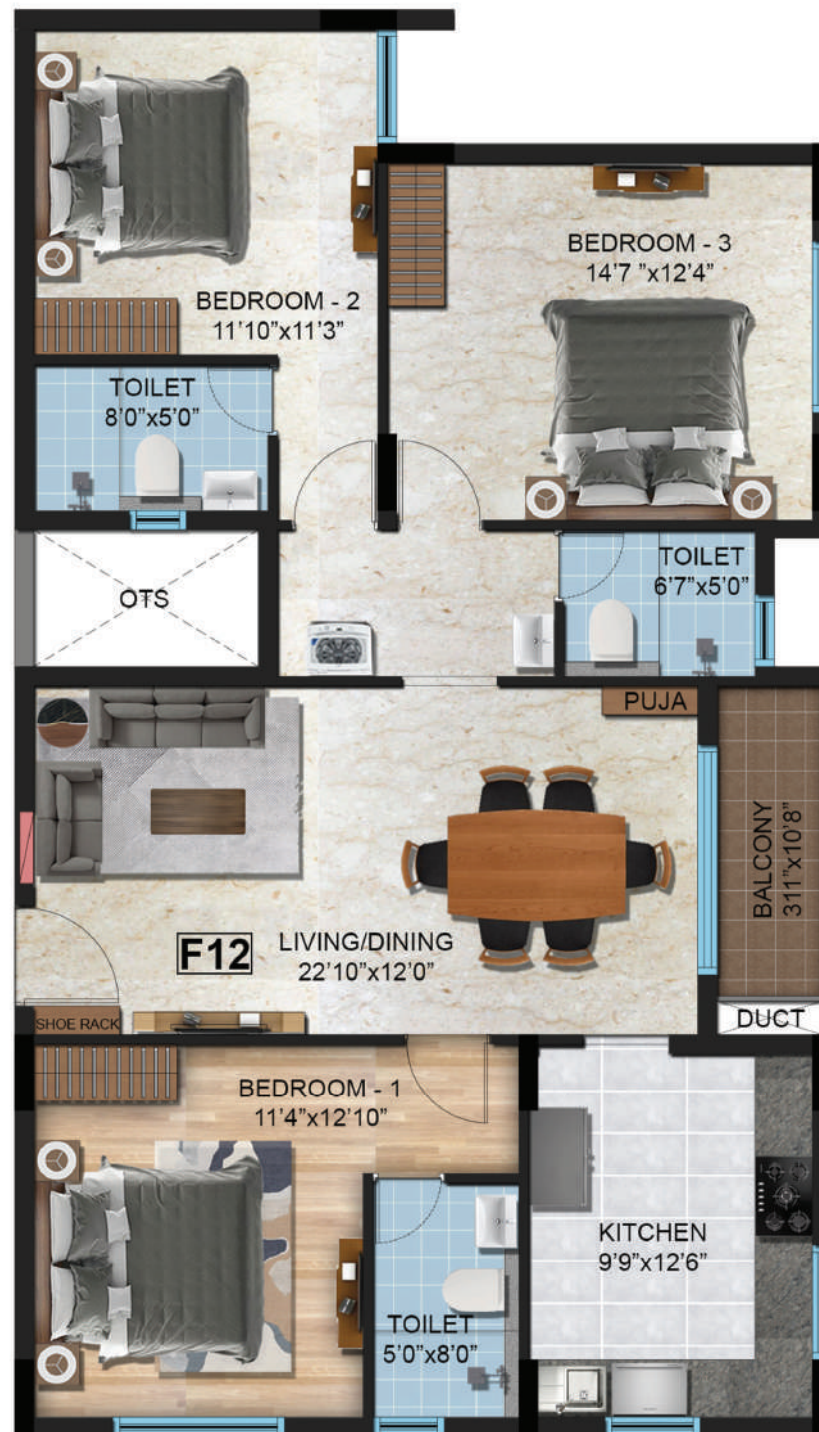
# FLAT - F11



Configuration	Super Build Up Area in Sq.ft	Carpet Area in Sq.ft		
		RERA Carpet Area	Exclusive Balcony Area	Total
4 BHK + 3T	1934	1325	86	1411



# FLAT - F12



Configuration	Super Build Up Area in Sq.ft	Carpet Area in Sq.ft		
		RERA Carpet Area	Exclusive Balcony Area	Total
3 BHK + 3T	1583	1103	43	1146





Crafted with Intent.

DESIGNED

WITH WARMTH.

## Structure

---

RCC Framed Structure conforming to Seismic Zone 3 regulations.

## Walls

---

Autoclaved aerated blocks with smart fix or equivalent Adhesive.

## Flooring

---

- Living, Dining & Bedroom - Large format vitrified tile flooring
- Toilets - Ceramic floor tiling with dadoing up to false ceiling
- Entrance, staircase, lobby - Granite flooring
- Terrace - Heat reflective tiles

## Doors

---

- Main door: 7'6" high teak wood door frame with 40mm thick designer shutter, polished on both sides, fitted with good quality branded digital lock.
- Bedroom door: Good quality wooden frame with 35mm thick laminated shutter and good quality branded lock.
- Toilet door: WPC door frame with NFC (natural fibre composite) laminate shutter

## Window & Ventilators

---

Good quality UPVC Long format windows and ventilators.

## Kitchen

---

Preparation for modular kitchen with necessary electrical and plumbing connections for sink and dishwasher.

## Balcony

---

Aesthetically and functionally designed MS handrail, vitrified flooring with necessary slopes, epoxy grout joints.

## DG Power Backup

---

- 700 Watts for 2BHK, 900 Watts for 3BHK and 1200 Walts for 4BHK of Power backup to all apartments (Essential fan and light points)
- 100% power backup for all common areas
- Covered/Open Car park for each flats

## Finishing

---

- Internal walls with putty and NAVIN'S Oyster white colour premium emulsion paint
- Outer walls are finished with premium antifungal emulsion paint

## Electricity

---

- Three phase electrical power supply with concealed FRLS copper wiring and circuit breakers.
- AC points in living, dining and all bedrooms.
- Modular switch and sockets or reputed make
- Electrical point for TV in living and all bedrooms
- Data Point in Living and Master Bedroom
- USB C Port power in Living and Master bedroom
- Geyser and Exhaust points in all Bathrooms
- Refrigerator, Washing Machine, Dish washer, Chimney, water purifier and all other Kitchen appliances points given

## Staircase

---

Granite flooring with SS 304 grade Modular Handrails.

## Plumbing & Sanitary Installations

---

- All sanitary fittings will be of Jaquar or equivalent make with single lever diverter with overhead shower and wall hung closet.
- CPVC concealed waterline.

## Water Supply Arrangements

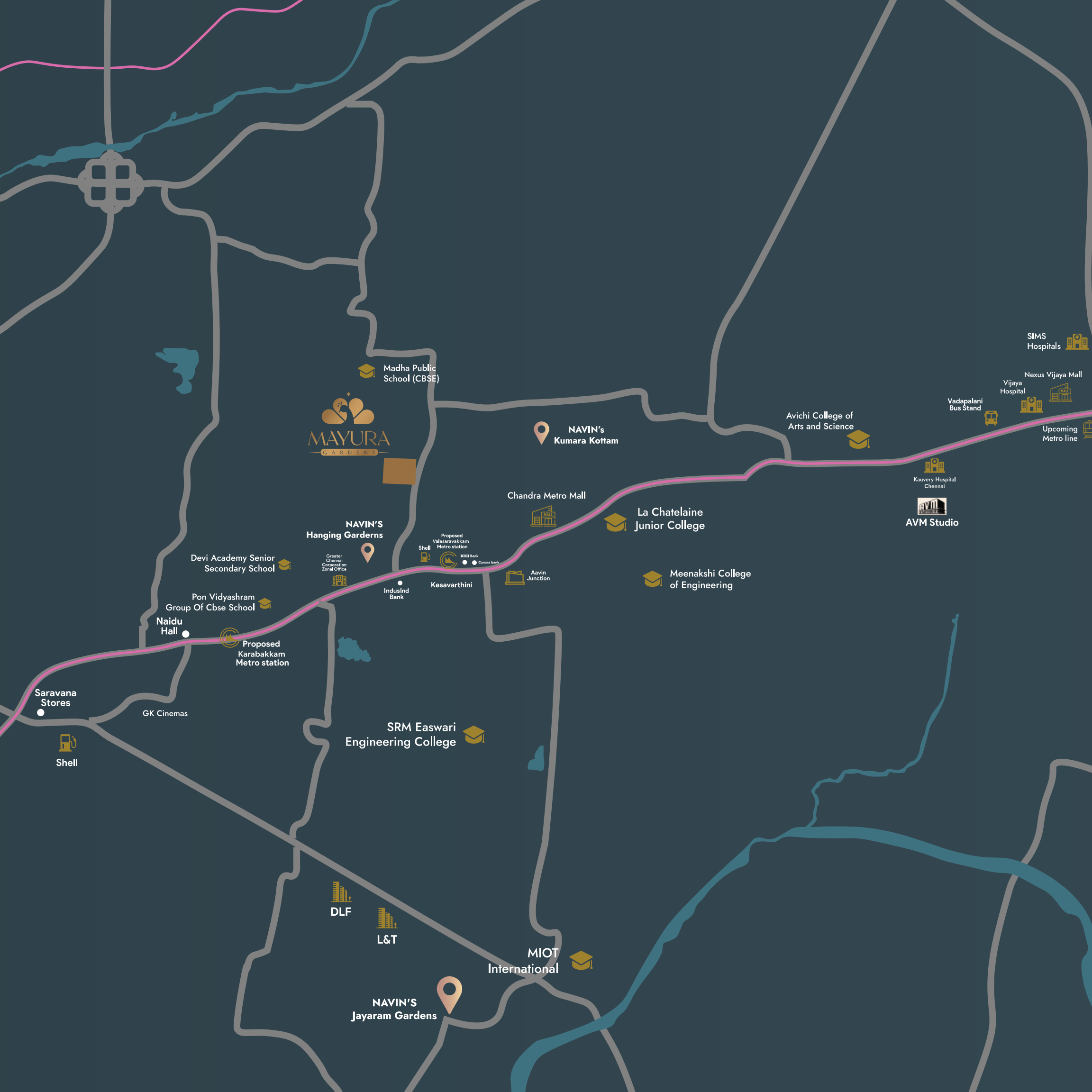
---

Bore well/ open well for tapping groundwater- sump to store water with arrangements for pumping water to the overhead tank

## Lifts

---

4 nos of Stainless Steel Automatic 10 passenger lift of reputed make with ARD function



MAYURA  
GARDENS

Madha Public School (CBSE)

NAVIN's  
Kumara Kottam

Chandra Metro Mall

La Chatelaine  
Junior College

Avichi College of  
Arts and Science

Kauvery Hospital  
Chennai

AVM Studio

NAVIN'S  
Hanging Gardens

Devi Academy Senior  
Secondary School

Pon Vidyashram  
Group Of Cbse School

Naidu  
Hall

Proposed  
Karabakkam  
Metro station

Kesavarthini

Greater  
Chennai  
Corporation  
Zonal Office

Shell  
Proposed  
Valasaravakkam  
Metro station  
ICICI Bank  
Canara Bank

Aavin  
Junction

Meenakshi College  
of Engineering

SRM Easwari  
Engineering College

DLF

L&T

MIOT  
International

NAVIN'S  
Jayaram Gardens

SIMS  
Hospitals

Nexus Vijaya Mall

Vijaya  
Hospital

Vadapalani  
Bus Stand

Upcoming  
Metro line

Saravana  
Stores

GK Cinemas

Shell

# AN ADDRESS

That Connects You  
Seamlessly To The World, In & Out.



Vadapalani  
Metro station

Vadapalani  
Junction

## Schools:

---

- Arise 'n' Shine International School Valasaravakkam – 500m
- Madha Public School (CBSE) - 900m
- Devi Academy Senior Secondary School – 1.4 Km
- Pon vidyashram group of cbse school – 1.5 Km

## Colleges:

---

- SRM Easwari Engineering College – 2.3 Km
- Meenakshi College of Engineering – 2.5 Km
- Avichi College of Arts and Science – 3.0 Km
- La Chatelaine Junior College - 1.5 KM

## Hospitals:

---

- Kauvery Hospital – 3.6 Km
- MIOT International – 4.0 Km
- Vijaya Hospital – 4.1 Km
- SIMS Hospitals – 5 Km

## Entertainment Hub:

---

- Chandra Metro Mall – 2.1 Km
- GK Cinemas – 2.8 Km
- Nexus Vijaya Mall – 4.3 Km

## Existing Project :

---

- Navins Hanging Gardens -550 m
- Navins Jayaram Gardens - 5.0 Km
- Navins Kumara Kottam - 1.0 Km.

# PAYMENT SCHEDULE

10%

On Booking

50%

Within 30 days  
of booking

10%

Upon commencement  
of foundation stage

10%

Upon commencement  
of respective roof slab

10%

Upon commencement  
of Internal Plastering

05%

Upon commencement  
of the Flooring

05%

Before  
handing over



## **Other Charges:**

- Registration Charges (as per Govt. norms)
- Legal Fees, Documentation Charges, and Incidental Expenses
- Infrastructure charges
- Corpus Fund
- Miscellaneous expenses
- Maintenance charges
- Solar Panel charges
- Service connection charges, fees, deposits, and incidental expenses for electricity, water supply, drainage connection, etc.,
- GST

# Awards that affirm our promise, YEAR AFTER YEAR



**IGBC GOLD RATED  
GREEN BUILDING**

Navins Starwood - 2025



**CIDC VISHWAKARMA AWARD FOR  
CONSTRUCTION HEALTH, SAFETY &  
ENVIRONMENT (2023)**



**IGBC SILVER RATED  
GREEN BUILDING**

Navins Hanging Gardens - 2025



**RESIDENTIAL  
COMPLEX OF  
THE YEAR**

**MID SEGMENT  
PROJECT OF  
THE YEAR**

Realty+ Conclave & Excellence Awards - South (2021)



**IGBC NET ZERO  
WATER - DESIGN**

Navin's Anthiea Poetry - 2025



**CIDC VISWAKARMA AWARD  
BEST CONSTRUCTION PROJECT**

Navin's Starwood Towers 2.0 (2021)



**CIDC VISWAKARMA AWARD FOR  
BEST CONSTRUCTION PROJECT**

Navin's Hillview Avenue, Thirumudivakkam



**IGBC NATIONAL GREEN  
CHAMPION AWARD (2019)**



**AND 50 MORE AWARDS**

Scan this QR code to explore  
more of our awards and recognitions





RERA: TNRERA/29/BLG/0403/2025  
www.rera.tn.gov.in



For Bookings Contact: +91 8870 065 065.

Promoter : Navin Housing & Properties (P) Ltd.

TEL : 044-4320 7777 | Email : sales@navins.in

navins.in  | @navinhousing    | @navins  

Registered & Corporate Office: Navin's Triumph, No. 802 & 804, Anna Salai, Nandanam, Chennai - 600 035, India.

Site Address: #47, Shridevikuppam Main Rd, Valasaravakkam, Chennai, Tamil Nadu 600087

Disclaimer : The imagery used and the details given may not represent actuals but are only indicative. Interested party should verify and confirm all the information including designs, plans, specifications, facilities, features, payment schedule, terms of sales, etc with the company in prior to concluding any decision for buying in the project. The company is not responsible for the consequences of any actions taken by the viewer by relying on such materials/information without independently verifying with the company. In no event shall the company be liable for any direct, indirect, special, incidental and consequential damage arising out of the information contained herein. Accessories, furniture etc shown are not part of the units but are illustrations